



SN-1000BT
SN-1500BT



SN-2000BT
SN-2500BT
SN-3000BT



Features

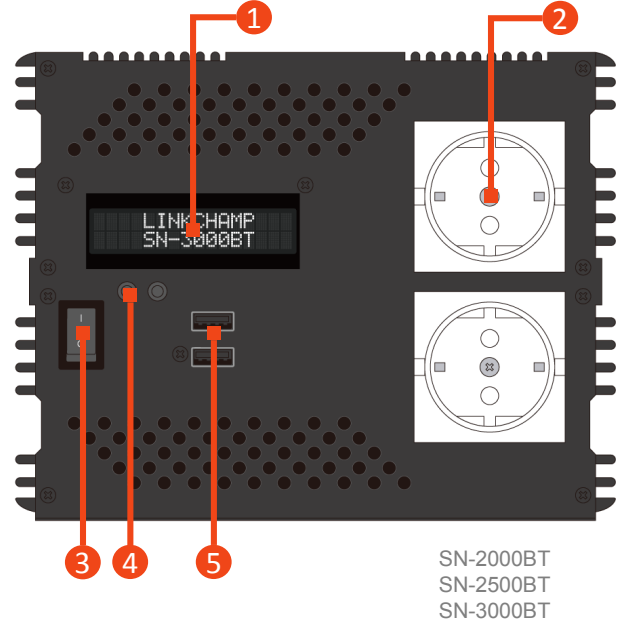
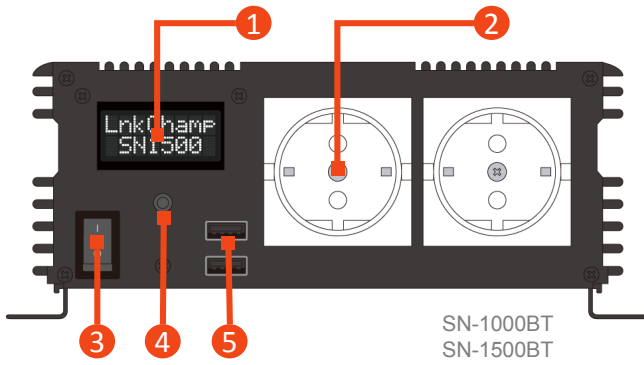
- NEW** Bluetooth Connectivity
- NEW** Smart Display & USB Quick Charge 3.0
- NEW** Settings Fully Adjustable by App
- Pure Sine Wave Output
- Microcontroller Integrated
- Energy Saving Mode & Intelligent Fan Control
- Input & Output Fully Isolation
- Intelligent PWM Output Regulation
- Multi Pre-Alarm & Shutdown Alarm Protections: Battery Type Detection / Polarity Reverse / Low Voltage Short Circuit / Overheat / Overload
- Aluminum Housing
- 100% Made in Taiwan

Model	SN-1000BT	SN-1500BT	SN-2000BT	SN-2500BT	SN-3000BT	
Info						
Release Date	Available Now	Available Now	2021	2021	2021	
System						
Continuous Power	1000W	1500W	2000W	2500W	3000W	
Surge Power	2000W	3000W	4000W	5000W	6000W	
Output Voltage	EU: 220/230/240 VAC (🔌 App); USA: 110/120/127 VAC (🔌 App);					
Output Waveform	Pure Sine Wave					
Total Harmonic Distortion	< 3%					
Output USB Port	QC3.0 x 2					
Standby Current (Normal)	DC 12V	< 1.0A	< 1.2A	< 2.0A	< 2.5A	
	DC 24V	< 0.8A	< 0.9A	< 1.3A	< 1.5A	
Standby Current (Saving)	< 0.15A					
Output Regulation	< ±5% Intelligent PWM					
Output Frequency	50/60 Hz (🔌 App)					
Input Voltage	DC 12V: 10~15V; DC 24V: 20~30V					
Efficiency	> 85%					
Protection						
Input Type Auto-Detection	Yes					
Input Polarity Reverse Prot.	Fuse					
Input Low Voltage Prot.	DC 12V: < 10.5V Pre-Alarm, < 10V Auto-off & Alarm (🔌 App) DC 24V: < 21.0V Pre-Alarm, < 20V Auto-off & Alarm (🔌 App)					
Short Circuit Prot.	Yes					
Overheat	> 60°C Pre-Alarm, > 65°C Auto-off & Alarm (🔌 App)					
Overload	Pre-Alarm	> 80% ~ 110% (🔌 App)				
	Auto-off & Alarm	> 90% ~ 120% (🔌 App)				
Cooling	Intelligent Fan / Force Cooling (🔌 App)					
Mechanical						
Fuse	DC 12V	25A x 6PCS	25A x 8PCS	25A x 12PCS	20A x 16PCS	25A x 16PCS
	DC 24V	20A x 6PCS	20A x 8PCS	15A x 12PCS	15A x 16PCS	20A x 16PCS
AC Outlets	EU: 2; USA: 3 (GFCI optional)					
Dimension (LxWxH) (mm)	360 x 227 x 88	430 x 227 x 88	360 x 200 x 157	430 x 200 x 157	430 x 200 x 157	
Net Weight	3.6 kg	5.5 kg	7.8 kg	12.0 kg	12.0 kg	
Display	8x2 OLED (8x2 LCD optional)					
RC Accessory	-		YES			
Note:	(🔌 App): Adjustable by App					



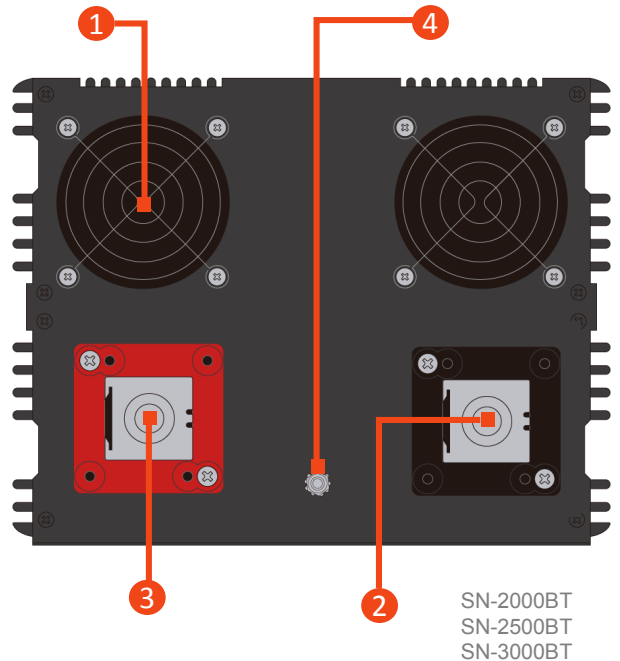
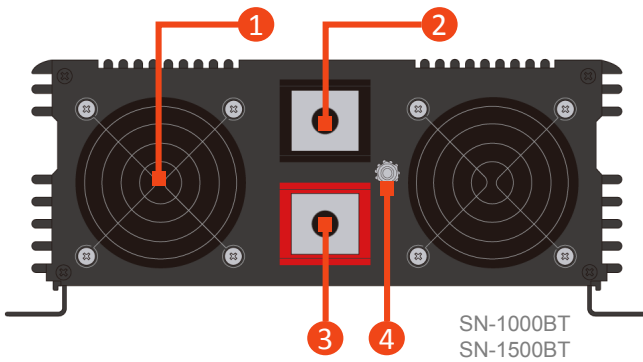
■ Front Panel

- ① 8x2 Display
- ② AC Output
- ③ Main Switch
- ④ Display Select Button
- ⑤ USB Port



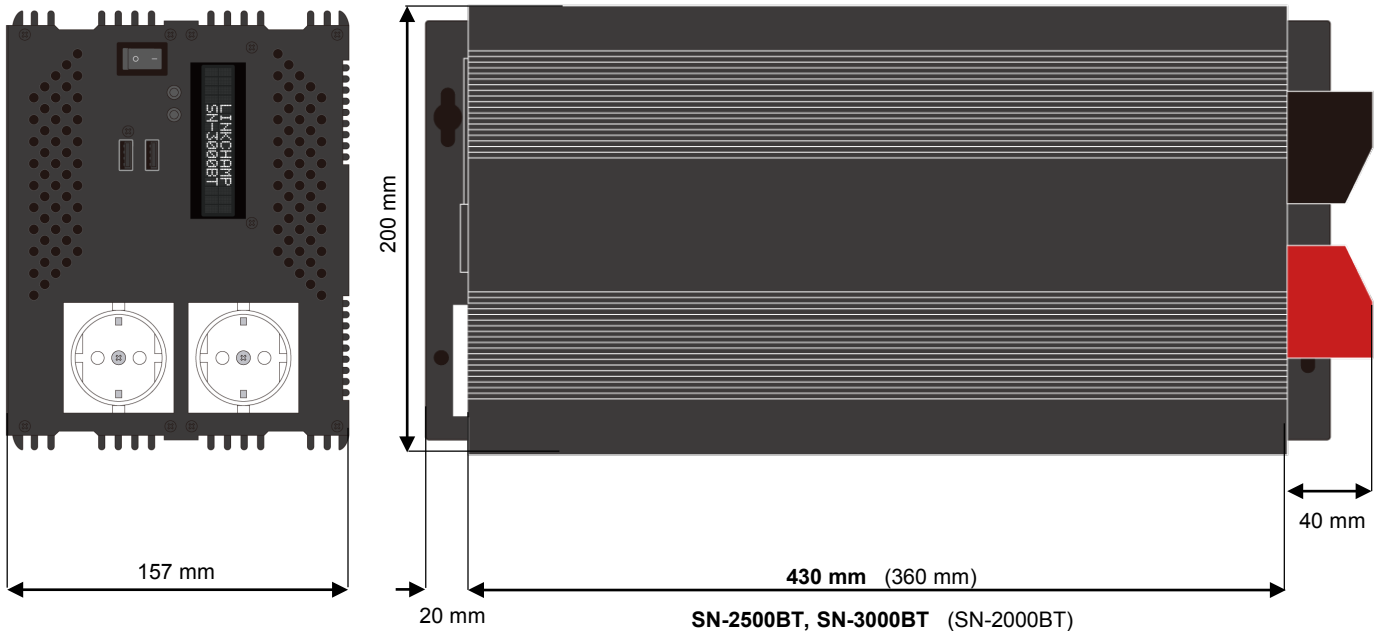
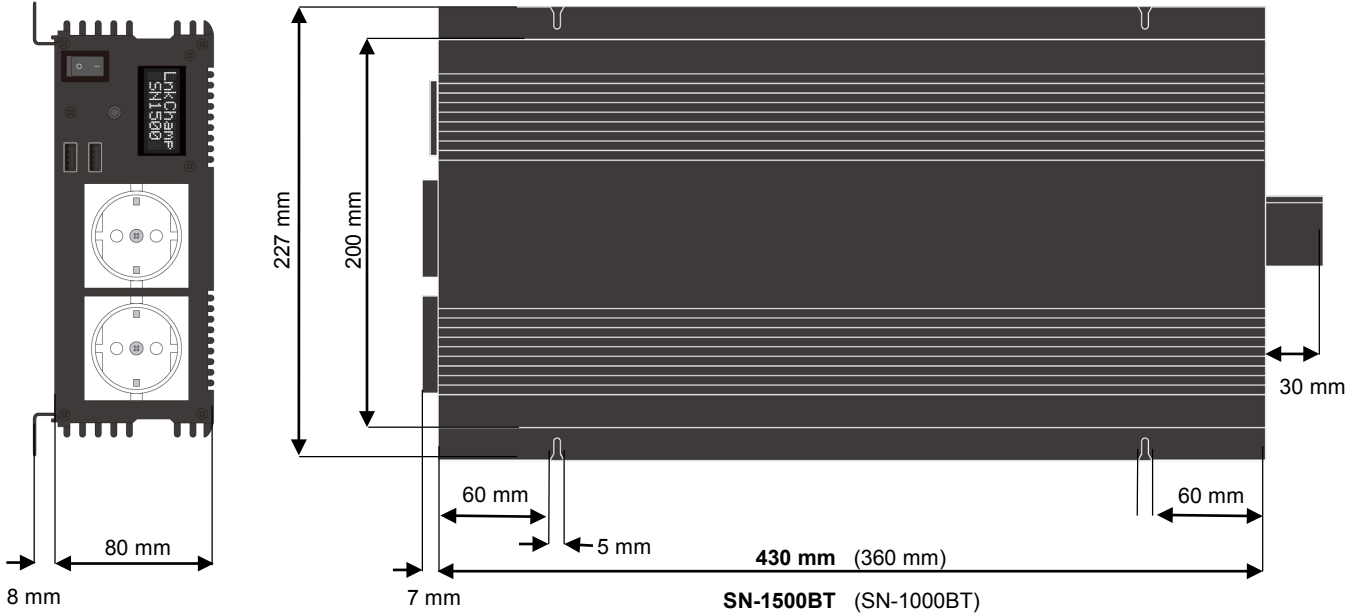
■ Rear Panel

- ① Fan
- ② Negative Terminal
- ③ Positive Terminal
- ④ Ground Terminal





■ Mechanical Drawings





8x2 Display

MENU

Page 01

Input Voltage: 12.5V E
Output Watts: 1500W B

(E)nergy Saving / (S)tandard Operating Mode:
Select (E) mode when using the application periodically.
Select (S) mode when using the application frequently.

Page 02

Output Hz: 50Hz E
Output Voltage: 230V B

(B)luetooth Connection
(B): Connected
(NONE): Waiting for connection

Page 03

Temperature (°C): 50°C E
00h00m B

The temperature reading from the inverter internal sensor.

Timer (h / m) : 00h00m B
Countdown timer in Hours / Minutes. 00h00m if no setup.

PROTECTION EVENTS

Warning (< ! >)

Low Volt

Shutdown (X)

Low Volt

Overload

Overtemp

ShortCt.

HighVolt

When encountering protection scenario

App

Real-time Device Status

Fully Customizable Settings

Advanced Protection Settings

Multi-Languages Support