

CAR AUDIO | 2020

 **FOCAL**<sup>®</sup>  
LISTEN BEYOND



We, Focal,  
strive to create sound  
equipment that honours the artist's  
musical creation and empowers you to  
feel a new dimension of the music. We want  
every nuance to be revealed with precision and  
purity. To do this, we push the limits of the current  
boundaries in sound technology, and go beyond  
the traditional approach thinking differently.  
With Focal, let the sound thrill your senses  
until you go beyond the usual perception  
of music and discover new fields  
of emotion.

LISTEN BEYOND

# “ THE AMPLIFIED DRIVING EXPERIENCE ”

---



For four decades, Focal has been applying its unique sound signature to speaker drivers and high-end loudspeakers. We are renowned worldwide for our innovations which have given birth to exclusive technologies, and some of our loudspeakers have gone on to become world-renowned references.

Our philosophy is to promote our expertise made in France: 100% of our products are designed and developed by our engineers, and a large part of our collections are made in France in our own workshops. All Focal products benefit from innovations which result from the on-going research in the field of acoustics. This technological heritage, protected by numerous patents, ensures a sound which is clear, powerful and true to nature; for providing the best audio systems in each category.

Our passion for music combined with our passion for cars led to the Car Audio Collection that launched in the 90s. Focal offers audio systems and kits for lovers of beautiful cars, to unite the pure pleasure of driving with the love of sound and music. From the most prestigious custom installation to kits to fit in your car, the solutions are always optimized for your vehicle. Our technology brings together the best innovations and materials to enhance the sound environment and make your journey an intensely pleasurable experience.

Innovation and performance, the highest levels of expertise and pleasure are the brand's values. They define Focal's signature, whose unique goal is to take you beyond sound. Listen Beyond.

# CAR AUDIO

The birth of the Car Audio division in the 90s allowed Focal to offer a Hi-Fi sound to music and car enthusiasts, uniting the pleasure of driving with that of a pure sound.

For us, innovation means pushing the boundaries of what's possible. That's why we are constantly playing with the mobile environment around us, and as a result are developing our range of kits. Thanks to the meticulous work of our engineers, we are achieving this and always expanding our offers. Our aim is to offer you high-performance products that are aesthetically pleasing and easy to install. Whether a custom creation with Utopia M, our flagship line, or an Access kit offering strategic price positioning, we devote the same care to the manufacturing of every single speaker driver.

Inspired by the very best Focal technologies, the **Utopia M** line and its Beryllium tweeter deliver acoustic quality that is quite simply exceptional... All wrapped up in finishes that take on the ultimate high-end Hi-Fi design codes.

Discover the performance of the iconic yellow cone, the emblem of sportiness, dynamics and power. With its 'M'-shaped aramid-fibre inverted dome tweeter and its 'push-pull' motor, the **K2 Power** line is in a league of its own.

Equipped with a flax cone, the new **Flax Evo** line embodies the quest for sound performance, combined with meticulous aesthetics. The sandwich is made of glass fibre and flax, a harmonious union of rigidity, weight and damping, for an acoustic rendering that is as sharp as it is powerful.

Forget your existing audio system: treat yourself to a fresh sound, with defined midranges thanks to the **Polyglass** kits. Named after the cone that characterises it, the Polyglass line has already proven its worth.

**Access** brings you closer to the ultimate in Focal innovation with its exclusive DFS cone, robust and reliable. Access audio kits offer high performance and strategic price positioning.

Compatible with a wide range of vehicles, quick and easy to install, **Universal** kits deliver a detail-rich and powerful sound without altering the aesthetics of your car's cabin. Leaving you to simply take pleasure in the listening experience.

The young generation will also find with the **Auditor** line the Focal sound expertise at a very affordable budget. The design and select technologies will provide the perfect audio accompaniment to enhance the driving experience.

01  
02  
03  
04  
05  
06  
07

**UTOPIA**  
'À la carte' concept

**K2 POWER**  
More than products, a lifestyle!

**FLAX EVO**  
The perfect balance

**POLYGLASS**  
A winning combination

**ACCESS**  
Accessible Focal technology

**UNIVERSAL**  
An optimal compatibility

**AUDITOR**  
Your first installation with Focal sound

**AND ALSO**  
Subwoofers, electronics, accessories...

# UTOPIA

MADE IN  
FRANCE

## 'À la carte' concept

For years, the Utopia range has been a myth for all music and car lovers. It has become a benchmark thanks to our unique technologies.

With our rich history and strong DNA, we set ourselves a huge challenge: to renew the range and establish a new reference of high-end drivers in the market.

And thus Utopia M was born, the quintessence of our expertise and our latest patented technologies.

Utopia M is an innovative, 'à la carte' concept, that lets you build your own bespoke system depending on your vehicle, the only limit being your creativity and that of the installer fitting it. When devising its unique design, a mix of tradition and innovation, our designers drew on the codes and richness of French architecture.

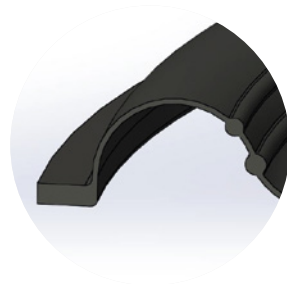
This work was possible thanks to the development of our patented 'M'-profile 'W' sandwich cone, which pushes the boundaries by perfectly combining the 3 criteria essential for creating the ideal driver: rigidity/lightness/damping.

In combination with our patented TMD® surround, distortion is reduced, thus increasing the precision and realism of the midrange. Our Beryllium tweeter also benefits from these innovations and includes an 'M'-shaped inverted dome combined with our TMD® surround, which provides a striking level of detail.

With Utopia M, the legend continues...



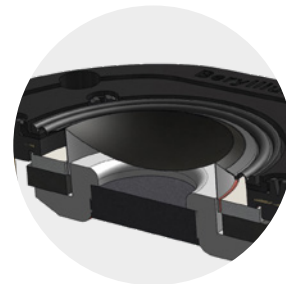
> 'M'-profile 'W' sandwich cone



> TMD® Surround (Tuned Mass Damper)



> Red neodymium motor



> 'M'-shaped Beryllium dome and TMD® Surround





	<b>TBM</b>	<b>6WM</b>	<b>3.5WM</b>
• Type	Tweeter	Woofer	Midrange
• Diameter	-	6½" (165mm)	3½" (87.5mm)
• Cone	'M' shape pure Beryllium dome	'M'-profile 'W'	'M'-profile 'W'
• Surround technology	Tuned Mass Damper (TMD*)	Tuned Mass Damper (TMD*)	Tuned Mass Damper (TMD*)
• Motor	Neodymium	Neodymium	Neodymium
• Mounting depth	5/16" (9mm)	2" (51.5mm)	1¼" (31mm)
• Voice coil diameter	1" (25mm)	3½" (80mm)	1¾" (45mm)
• Voice coil height	1/16" (1.8mm)	5/16" (15.5mm)	5/16" (8mm)
• Impedance	4Ω	4Ω	4Ω
• Max. power	200W	200W	100W
• Nom. power	20W RMS	100W RMS	50W RMS
• Sensitivity (2.83V/1m)	95dB	91.5dB	88dB
• Frequency response	1.5kHz - 50kHz	60Hz - 6kHz	200Hz - 10kHz
• Accessories	Supplied mounting brackets	Optional grille	Optional grille



**6" grille**

'M'-shaped design  
Aluminium ring

Sold separately by unit



**3.5" grille**

'M'-shaped design  
Aluminium ring

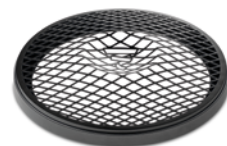
Sold separately by unit



### 8WM

### 10WM

• Type	Woofer	Subwoofer
• Diameter	8" (200mm)	10" (250mm)
• Cone	'M'-profile 'W'	'M'-profile 'W'
• Surround technology	Tuned Mass Damper (TMD®)	-
• Motor	Neodymium	Neodymium
• Mounting depth	2½" (52mm)	4¾" (108mm)
• Voice coil diameter	3½" (80mm)	Dual voice coil 4¾" (120mm)
• Voice coil height	⅝" (15.5mm)	1¾" (45mm)
• Impedance	4Ω	2 x 4Ω
• Max. power	200W	800W
• Nom. power	100W RMS	400W RMS
• Sensitivity (2.83V/1m)	91.8dB	87.5dB
• Frequency response	45Hz - 5kHz	25Hz - 800Hz
• Suggested load volume	-	Sealed enclosure: 0.35 to 0.52 cu ft (10 to 15 l)
• Accessories	Optional grille	-



### Grille 8"

'M'-shaped design  
Aluminium ring

Sold separately by unit



Utopia wouldn't be Utopia without this new 165W-XP kit. An evolution of one of our most iconic products, which opens the door to this world and its exceptional performance. It integrates our latest technologies such as the TMD® surround, a progressive spider and a new, pure Beryllium inverted dome tweeter.



### 165W-XP Passive

• Type	2-way component kit
• Diameter	6½" (165mm)
• Cone	Composite 'W' sandwich
• Surround technology	Tuned Mass Damper (TMD®)
• Motor	Ferrite
• Mounting depth	2½" (74mm)
• Voice coil diameter	1¼" (32mm)
• Voice coil height	⅝" (16mm)
• Tweeter	Pure Beryllium inverted dome
• Crossover	Separated: 12/18dB bi-amp
• Adjustable tweeter level	+3; 0; -3dB/oct
• Impedance	2Ω
• Max. power	200W
• Nom. power	100W RMS
• Sensitivity (2.83 V/1 m)	93dB
• Frequency response	60Hz - 40kHz
• Accessories	Grilles included



# K2 POWER

MADE IN  
FRANCE

More than products, a lifestyle!

Besides its distinct yellow colour, the K2 Power line has become a lifestyle object in its own right worldwide. Once more, our engineers have pushed back the limits of performance to continue making the reputation of this extraordinary line synonymous with power and precision!

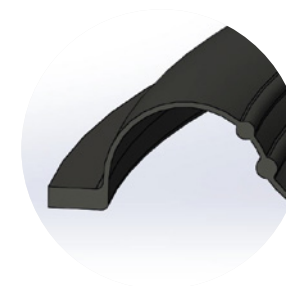
The K2 Power's composite sandwich cone combines three key features: rigidity, lightness and damping. This unique expertise 'Made in Focal' combines a new patented TMD<sup>®</sup> (Tuned Mass Damper) rubber surround which controls unwanted resonances to provide a clean and neutral midrange with very low harmonic distortion.

The ventilated voice coil gap keeps the temperature of the voice coil low and stable for increased power handling and reliability. The subwoofers have been designed to work in very compact volumes while having a very high SPL and an amazing energy!

Finally, the major innovation of this line made in France is the 'M'-profile aramid-fibre inverted dome tweeter. This totally exclusive 'M'-profile inverted dome tweeter has been specifically designed to increase precision in the very high frequencies. The push-pull motor inspired by the IAL technology dampens acoustic resonances on the back of the membrane and extends the low end of the frequency response, in a very compact housing.



> Aramid-fibre sandwich cone



> TMD<sup>®</sup> surround  
(Tuned Mass Damper)



> Ventilated voice coil  
cooling system



> 'M' profile inverted  
dome tweeter





	<b>EC 165 K</b>	<b>ES 100 K</b>	<b>ES 130 K</b>	<b>ES 165 K</b>
• <b>Type</b>	2-way coaxial kit	2-way component kit	2-way component kit	2-way component kit
• <b>Diameter</b>	6½" (165mm)	4" (100mm)	5" (130mm)	6½" (165mm)
• <b>Cone</b>	K2 composite sandwich	K2 composite sandwich	K2 composite sandwich	K2 composite sandwich
• <b>Surround technology</b>	Tuned Mass Damper (TMD®)	Tuned Mass Damper (TMD®)	Tuned Mass Damper (TMD®)	Tuned Mass Damper (TMD®)
• <b>Motor</b>	Ferrite	Neodymium	Ferrite	Ferrite
• <b>Mounting depth</b>	2½" (74mm)	1¾" (39mm)	2¾" (60.4mm)	2½" (74mm)
• <b>Voice coil diameter</b>	1" (25mm)	¾" (20mm)	1" (25mm)	1¼" (32mm)
• <b>Voice coil height</b>	¾" (15mm)	¾" (8.5mm)	½" (12mm)	¾" (15mm)
• <b>Tweeter</b>	TKM ('M' profile aramid-fibre inverted dome)	TKM ('M' profile aramid-fibre inverted dome)	TKM ('M' profile aramid-fibre inverted dome)	TKM ('M' profile aramid-fibre inverted dome)
• <b>Crossover</b>	6 dB	Separated: 12/12dB/oct	Separated: 6-12/12dB/oct	Separated: 6-12/12dB/oct
• <b>Adjustable tweeter level</b>	-	+3; 0; -3dB/oct	+3; 0; -3dB/oct	+3; 0; -3dB/oct
• <b>Impedance</b>	4Ω	4Ω	4Ω	4Ω
• <b>Max. power</b>	160W	120W	160W	200W
• <b>Nom. power</b>	80W RMS	60W RMS	80W RMS	100W RMS
• <b>Sensitivity (2.83V/1m)</b>	93dB	90dB	90dB	90.8dB
• <b>Frequency response</b>	60Hz - 22kHz	110Hz - 22kHz	65Hz - 22kHz	60Hz - 22kHz
• <b>Suggested load volume</b>	-	-	-	-
• <b>Accessories</b>	Grilles included	Grilles included	Grilles included	Grilles included

	<b>ES 165 K2</b>	<b>ES 165 KX2</b>	<b>ES 165 KX3</b>	<b>E25 KX</b>	<b>E30 KX</b>
• <b>Type</b>	2-way component kit	2-way component kit	3-way component kit	Subwoofer	Subwoofer
• <b>Diameter</b>	6½" (165mm)	6½" (165mm)	Woofer: 6½" (165mm) Midrange: 80mm	10" (250mm)	12" (300mm)
• <b>Cone</b>	K2 composite sandwich	K2 composite sandwich	K2 composite sandwich	K2 composite sandwich	K2 composite sandwich
• <b>Surround technology</b>	Tuned Mass Damper (TMD®)	Tuned Mass Damper (TMD®)	Tuned Mass Damper (TMD®)	-	-
• <b>Motor</b>	Ferrite	Ferrite	Woofer: Ferrite Midrange: Neodymium	Dual ferrite	Dual ferrite
• <b>Mounting depth</b>	2½" (73.9mm)	3" (75.9mm)	Woofer: 3" (75.9mm) Midrange: 1½" (33.5mm)	6¾" (172mm)	6¾" (172mm)
• <b>Voice coil diameter</b>	1¼" (32mm)	1¾" (40mm)	1¾" (40mm)	2¾" (65mm)	2¾" (65mm)
• <b>Voice coil height</b>	¾" (15.5mm)	¾" (16.5mm)	¾" (16.5mm)	2¾" (55mm)	2¾" (55mm)
• <b>Tweeter</b>	TKM ('M' profile aramid-fibre inverted dome)	TKMX ('M' profile aramid-fibre inverted dome)	TKMX ('M' profile aramid-fibre inverted dome)	-	-
• <b>Crossover</b>	Bi-amp separated: 6-12/12dB/oct	Bi-amp separated: 6-12/12-18dB/oct	Separated: 6-12/12/12dB/oct	-	-
• <b>Adjustable tweeter level</b>	+3; 0; -3dB/oct	+3; 0; -3dB/oct	+3; 0; -3dB/oct	-	-
• <b>Impedance</b>	2Ω	2Ω	4Ω	2 x 4Ω	2 x 4Ω
• <b>Max. power</b>	200W	240W	240W	1200W	1600W
• <b>Nom. power</b>	100W RMS	120W RMS	120W RMS	600W RMS	800W RMS
• <b>Sensitivity (2.83V/1m)</b>	92.8dB	92.5dB	93dB	84.5dB	86.5dB
• <b>Frequency response</b>	60Hz - 22kHz	55Hz - 22kHz	45Hz - 22kHz	25Hz - 500Hz	25Hz - 500Hz
• <b>Suggested load volume</b>	-	-	-	Sealed enclosure: 0.6 to 0.77 cu ft (17 to 22 l) Bass-reflex: 0.77 to 1.23 cu ft (22 to 35 l)	Sealed enclosure: 0.99 to 1.23 cu ft (28 to 35 l) Bass-reflex: 0.99 to 1.76 cu ft (28 to 50 l)
• <b>Accessories</b>	Grilles included	Grilles included	Grilles included	-	-

# FLAX EVO

NEW

MADE IN  
FRANCE

## The perfect balance for high dynamic

Over recent years, many innovations have appeared in the materials field: by combining traditional natural materials with modern composites, a whole new genre of hybrid materials has emerged.

Just as our 'sandwich' technology, perfectly mastered with our 'K2' and 'W' cones, is the optimal combination of rigidity/weight/damping, flax was the engineers' obvious choice for the sandwich core. The use of an ecotextile, combined with composite technologies, provides an innovative solution for a sandwich structure: we use a very high-quality flax -French flax, considered the best in the world- and place it between two layers of glass fibre.

Manufactured in our workshops in France, the Flax cone is characterised by its very natural sound without colouration, a rich reproduction in the midrange and clear bass strokes. From the Home to the Car Audio collection, it features in many of Focal's flagship products with our Flax Evo line comprising kits with 2 and 3-way component kits, a coaxial kit, and subwoofers.

In addition to aluminium baskets, the TAM tweeter -another Focal exclusive technology developed and manufactured in our workshops- completes the range and sets itself apart through its qualities in terms of 'wide-angle' diffusion, a massive advantage for in-car installations.



# 3



> TAM tweeter



> TMD® Surround  
(Tuned Mass Damper)



> Flax sandwich cone



> Aluminium basket



### PC 165 FE

• <b>Type</b>	2-way coaxial kit	PS 130 FE	2-way component kit	PS 165 FE	2-way component kit
• <b>Diameter</b>	6½" (165mm)	5" (130mm)	6½" (165mm)		
• <b>Cone</b>	Flax sandwich	Flax sandwich	Flax sandwich		
• <b>Surround technology</b>	Tuned Mass Damper (TMD*)	Tuned Mass Damper (TMD*)	Tuned Mass Damper (TMD*)		
• <b>Motor</b>	Ferrite	Ferrite	Ferrite		
• <b>Mounting depth</b>	2⅞" (72.7mm)	2⅜" (59.7mm)	2⅞" (72.7mm)		
• <b>Voice coil diameter</b>	1" (25mm)	1" (25mm)	1" (25mm)		
• <b>Voice coil height</b>	½" (13mm)	⅜" (10mm)	⅝" (15mm)		
• <b>Tweeter</b>	Coaxial 'M'-profile inverted dome	TAM ('M'-profile Aluminium/Magnesium inverted dome)	TAM ('M'-profile Aluminium/Magnesium inverted dome)		
• <b>Crossover</b>	Integrated: 6dB/oct	Separated: 12/12dB/oct	Separated: 12/12dB/oct		
• <b>Adjustable tweeter level</b>	0; -3dB/oct	0; -3dB/oct	0; -3dB/oct		
• <b>Impédance</b>	4Ω	4Ω	4Ω		
• <b>Max. power</b>	140W	120W	140W		
• <b>Nom. power</b>	70W RMS	60W RMS	70W RMS		
• <b>Sensitivity (2.83V/1m)</b>	90dB	90.5dB	91.5dB		
• <b>Frequency response</b>	60Hz - 28kHz	75Hz - 28kHz	60Hz - 28kHz		
• <b>Accessories</b>	Mounting accessories, screws.	Mounting accessories, screws.	Mounting accessories, screws.		



### PS 130 FE



### PS 165 FE



### PS 165 FSE

2-way component kit	PS 165 FXE	2-way component kit	PS 165 F3E	3-way component kit
6½" (165mm)	6½" (165mm)	6½" (165mm)	Woofer: 6½" (165mm)	Midrange: 3⅝" 80mm
Flax sandwich	Flax sandwich	Flax sandwich	Flax sandwich	
Tuned Mass Damper (TMD*)	Tuned Mass Damper (TMD*)	Tuned Mass Damper (TMD*)	Tuned Mass Damper (TMD*)	
Ferrite	Ferrite	Ferrite	Ferrite	
2⅞" (54.5mm)	3" (77mm)	2⅞" (54.5mm)	Woofer: 2⅞" (72.7mm)	Midrange: 1⅝" (33.5mm)
1¼" (32mm)	1¼" (32mm)	1¼" (32mm)	Woofer: 1¼" (32mm)	Midrange: 1" (25mm)
⅞" (11mm)	⅝" (15mm)	⅞" (11mm)	Woofer: ⅝" (15mm)	Midrange: ⅜" (9mm)
TAM ('M'-profile Aluminium/Magnesium inverted dome)	TAM ('M'-profile Aluminium/Magnesium inverted dome)	TAM ('M'-profile Aluminium/Magnesium inverted dome)	TAM ('M'-profile Aluminium/Magnesium inverted dome)	TAM ('M'-profile Aluminium/Magnesium inverted dome)
Separated: 12/12dB/oct	Bi-amp separated: 12-18dB/oct	Separated: 12/12dB/oct	Separated: 12/12-18dB/oct	
0; -3dB/oct	0; -3dB/oct	0; -3dB/oct	0; -3dB/oct	
4Ω	4Ω	4Ω	4Ω	
120W	160W	120W	160W	
60W RMS	80W RMS	60W RMS	80W RMS	
91.5dB	90.5dB	91.5dB	90.5dB	
70Hz - 28kHz	55Hz - 28kHz	70Hz - 28kHz	60Hz - 28kHz	
Mounting accessories, screws.	Mounting accessories, screws.	Mounting accessories, screws.	Mounting accessories, screws.	



### PS 165 FXE



### PS 165 F3E



### P 20 FE

• <b>Type</b>	Sealed box and bass-reflex subwoofer
• <b>Diameter</b>	8" (200mm)
• <b>Cone</b>	Flax sandwich
• <b>Surround technology</b>	-
• <b>Motor</b>	Dual ferrite
• <b>Mounting depth</b>	4 5/8" (117mm)
• <b>Voice coil diameter</b>	1 1/2" (38mm)
• <b>Voice coil height</b>	1 1/8" (28mm)
• <b>Impedance</b>	4Ω
• <b>Max. power</b>	500W
• <b>Nom. power</b>	250W RMS
• <b>Sensitivity (2.83V/1m)</b>	82.5dB
• <b>Frequency response</b>	39Hz - 500Hz
• <b>Suggested load volume</b>	Sealed enclosure: 0.35 to 0.52 cu ft (10 to 15 l) Bass-reflex: 0.35 to 0.71 cu ft (10 to 20 l)



### P 20 FSE

• <b>Type</b>	Sealed box subwoofer
• <b>Diameter</b>	8" (200mm)
• <b>Cone</b>	Flax sandwich
• <b>Surround technology</b>	-
• <b>Motor</b>	Dual ferrite
• <b>Mounting depth</b>	3" (76mm)
• <b>Voice coil diameter</b>	1 1/2" (38mm)
• <b>Voice coil height</b>	1 5/16" (23mm)
• <b>Impedance</b>	4Ω
• <b>Max. power</b>	400W
• <b>Nom. power</b>	200W RMS
• <b>Sensitivity (2.83V/1m)</b>	86dB
• <b>Frequency response</b>	41Hz - 400Hz
• <b>Suggested load volume</b>	Sealed enclosure: 0.21 to 0.32 cu ft (6 to 9l)



### P 25 FE

• <b>Type</b>	Sealed box and bass-reflex subwoofer
• <b>Diameter</b>	10" (250mm)
• <b>Cone</b>	Flax sandwich
• <b>Surround technology</b>	-
• <b>Motor</b>	Dual ferrite
• <b>Mounting depth</b>	5 9/16" (140.6mm)
• <b>Voice coil diameter</b>	2" (50mm)
• <b>Voice coil height</b>	1 3/8" (35mm)
• <b>Impedance</b>	4Ω
• <b>Max. power</b>	600W
• <b>Nom. power</b>	300W RMS
• <b>Sensitivity (2.83V/1m)</b>	85dB
• <b>Frequency response</b>	33Hz - 500Hz
• <b>Suggested load volume</b>	Sealed enclosure: 0.35 to 0.88 cu ft (10 to 25 l) Bass-reflex: 0.88 to 1.23 cu ft (25 to 35 l)



### P 25 FSE

• <b>Type</b>	Sealed box subwoofer
• <b>Diameter</b>	10" (250mm)
• <b>Cone</b>	Flax sandwich
• <b>Surround technology</b>	-
• <b>Motor</b>	Dual ferrite
• <b>Mounting depth</b>	3" (76mm)
• <b>Voice coil diameter</b>	1 1/2" (38mm)
• <b>Voice coil height</b>	1 5/16" (23mm)
• <b>Impedance</b>	4Ω
• <b>Max. power</b>	400W
• <b>Nom. power</b>	200W RMS
• <b>Sensitivity (2.83V/1m)</b>	86dB
• <b>Frequency response</b>	41Hz - 400Hz
• <b>Suggested load volume</b>	Sealed enclosure: 0.42 to 0.64 cu ft (12 to 18 l)



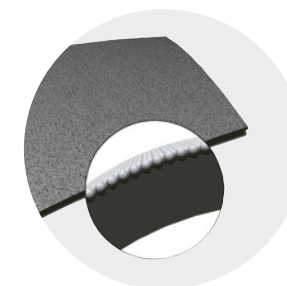
# POLYGLASS

## A winning combination for well-defined midranges

Over the thirty years it has been in existence, the Polyglass range has never stopped improving across the board, from concept to design. Our engineers have succeeded in creating high-quality 2-way component kits and coaxial kits that combine power, durability and compactness. Just as high-performing are our subwoofers, which can be used in sealed-box or bass-reflex form, and are a real asset to audio installations with their distinctive bass sounds.

The Polyglass cone is the line's crowning glory. It involves applying fine glass microbeads to a cellulose pulp (paper) cone. A process that combines the paper's excellent damping with the rigidity of glass. In addition to these assets, it produces well-defined midranges and well-controlled harmonic balance.

Together, all components of the range are meticulously combined to deliver a spectacular sound and surround the passengers with warm sound that has no colouration.



> Polyglass cone



> Aluminium basket



> Butyl surround



### PC 100



### PC 130



### PC 165

• <b>Type</b>	2-way coaxial kit	2-way coaxial kit	2-way coaxial kit
• <b>Diameter</b>	4" (100mm)	5" (130mm)	6½" (165mm)
• <b>Cone</b>	Polyglass	Polyglass	Polyglass
• <b>Motor</b>	Ferrite	Ferrite	Ferrite
• <b>Mounting depth</b>	2" (51.5mm)	2¼" (56.5mm)	2⅝" (65.5mm)
• <b>Voice coil diameter</b>	1" (25mm)	1" (25mm)	1" (25mm)
• <b>Tweeter</b>	Rotating Aluminium inverted dome	Rotating Aluminium inverted dome	Rotating Aluminium inverted dome
• <b>Crossover</b>	Integrated: 6dB/oct	Integrated: 6dB/oct	Integrated: 6dB/oct
• <b>Adjustable tweeter level</b>	-	-	-
• <b>Impedance</b>	4Ω	4Ω	4Ω
• <b>Max. power</b>	100W	120W	160W
• <b>Nom. power</b>	50W RMS	60W RMS	80W RMS
• <b>Sensitivity (2.83V/1m)</b>	90.9dB	91.6dB	93.6dB
• <b>Frequency response</b>	100Hz - 20kHz	80Hz - 20kHz	60Hz - 20kHz
• <b>Suggested load volume</b>	-	-	-
• <b>Accessories</b>	Grilles included	Grilles included	Grilles included



### PS 165 V1



### SUB P 25 DB



### SUB P 30 DB

2-way component kit	Subwoofer	Subwoofer
6½" (165mm)	10" (250mm)	12" (300mm)
Polyglass	Polypropylene	Polypropylene
Ferrite	5⅛" (145mm)	5⅛" (145mm)
2⅝" (65.5mm)	5⅞" (138.6mm)	6⅞" (160.5mm)
1" (25mm)	Dual voice coil: 2" (50mm)	Dual voice coil: 2⅝" (60mm)
Aluminium inverted dome	-	-
Separated: 6/12dB/oct	-	-
+3; 0; -3dB/oct	-	-
4Ω	4Ω	4Ω
160W	500W	600W
80W RMS	250W RMS	300W RMS
92.5dB	90.9dB	93.4dB
60Hz - 20kHz	42Hz - 500Hz	27Hz - 500Hz
-	Sealed enclosure: 0.52 to 1.23 cu ft (15 to 35 l) Bass-reflex: 1.23 to 2.12 cu ft (35 to 60 l)	Sealed enclosure: 0.88 to 1.59 cu ft (25 à 45 l) Bass-reflex: 1.23 to 2.12 cu ft (35 to 60 l)
Grilles included	-	-

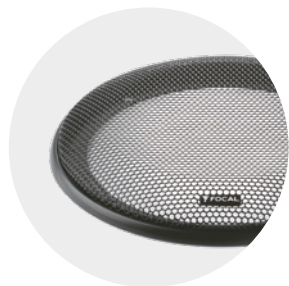
# ACCESS

## Accessible Focal technology

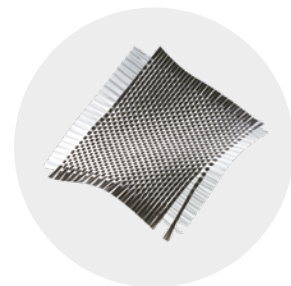
Access invites all drivers to experience Focal innovation and quality. With its established style and technical quality, this emblematic line prioritises performance: you are guaranteed the full experience of Focal technology in your car.

Power handling, the drop down into the bass and acoustics remain the common denominators across the Access range. The DFS (Dual Fiberglass Structure) cone is robust and reliable. The glass fibre is woven at 90° and sealed with a polyurethane coating, allowing it to be used in extreme acoustic and climatic conditions...

Access is more than a name; it's an unrivalled and world-renowned story. This complete line -2-way and 3-way component kits or 2-way coaxial kits can be combined with two subwoofers for renewed acoustic subtlety in your car- continues to offer what has always been its strength: unrivalled performance and strategic price positioning.



> Profiled grilles



> DFS\* cone



> Reinforced ABS basket





### 100 AC

### 130 AC

### 165 AC

• <b>Type</b>	2-way coaxial kit	2-way coaxial kit	2-way coaxial kit
• <b>Diameter</b>	4" (100mm)	5" (130mm)	6½" (165mm)
• <b>Cone</b>	DFS® (Dual Fiberglass Structure)	DFS® (Dual Fiberglass Structure)	DFS® (Dual Fiberglass Structure)
• <b>Motor</b>	Ferrite	Ferrite	Ferrite
• <b>Mounting depth</b>	2¼" (52.2mm)	2½" (54.7mm)	2½" (62.9mm)
• <b>Voice coil diameter</b>	1" (25mm)	1" (25mm)	1" (25mm)
• <b>Tweeter</b>	Rotating Aluminium inverted dome	Rotating Aluminium inverted dome	Rotating Aluminium inverted dome
• <b>Crossover</b>	Integrated: 6dB/oct	Integrated: 6dB/oct	Integrated: 6dB/oct
• <b>Impedance</b>	4Ω	4Ω	4Ω
• <b>Max. power</b>	80W	100W	120W
• <b>Nom. power</b>	40W RMS	50W RMS	60W RMS
• <b>Sensitivity (2.83V/1m)</b>	87.2dB	89.3dB	91dB
• <b>Frequency response</b>	70Hz - 20kHz	70Hz - 20kHz	60Hz - 20kHz
• <b>Accessories</b>	Grilles included	Grilles included	Grilles included

### 570 AC

### 690 AC

• <b>Type</b>	2-way coaxial kit	2-way coaxial kit
• <b>Diameter</b>	5 x 7" (130 x 180mm )	6 x 9" (164 x 235mm)
• <b>Cone</b>	DFS® (Dual Fiberglass Structure)	DFS® (Dual Fiberglass Structure)
• <b>Motor</b>	Ferrite	Ferrite
• <b>Mounting depth</b>	2¾" (59.5mm)	1¾" (30mm)
• <b>Voice coil diameter</b>	1" (25mm)	1¾" (30mm)
• <b>Tweeter</b>	Rotating Aluminium inverted dome	Rotating Aluminium inverted dome
• <b>Crossover</b>	Integrated: 6dB/oct	Integrated: 6dB/oct
• <b>Impedance</b>	4Ω	4Ω
• <b>Max. power</b>	120W	150W
• <b>Nom. power</b>	60W RMS	75W RMS
• <b>Sensitivity (2.83V/1m)</b>	92.8dB	91.3dB
• <b>Frequency response</b>	65Hz - 20kHz	50Hz - 20kHz
• <b>Accessories</b>	Without grilles	Grilles included





### 130 AS

### 165 AS

### 165 AS3

• <b>Type</b>	2-way component kit	2-way component kit	3-way component kit
• <b>Diameter</b>	5" (130mm)	6½" (165mm)	Woofer : 6½" (165mm) Midrange : 3½" (80mm)
• <b>Cone</b>	DFS® (Dual Fiberglass Structure)	DFS® (Dual Fiberglass Structure)	DFS® (Dual Fiberglass Structure)
• <b>Motor</b>	Ferrite	Ferrite	Ferrite
• <b>Mounting depth</b>	2½" (54.7mm)	2½" (62.9mm)	Woofer : 2½" (62.9mm) Midrange : 1½" (42.5mm)
• <b>Voice coil diameter</b>	1" (25mm)	1" (25mm)	1" (25mm)
• <b>Tweeter</b>	Aluminium inverted dome	Aluminium inverted dome	Aluminium inverted dome
• <b>Crossover</b>	Separated: 12/12dB/oct (5kHz)	Separated: 12/12dB/oct (5kHz)	Separated: 6/12dB/oct (5kHz)
• <b>Adjustable tweeter level</b>	+3; 0; -3dB/oct	+3; 0; -3dB/oct	+3; 0; -3dB/oct
• <b>Impedance</b>	4Ω	4Ω	4Ω
• <b>Max. power</b>	100W	120W	160W
• <b>Nom. power</b>	50W RMS	60W RMS	80W RMS
• <b>Sensitivity (2.83V/1m)</b>	90dB	91.3dB	90dB
• <b>Frequency response</b>	65Hz - 20kHz	60Hz - 20kHz	55Hz - 20kHz
• <b>Suggested load volume</b>	-	-	-
• <b>Accessories</b>	Grilles included	Grilles included	Grilles included

### 25 A4

### 30 A4

Subwoofer	Subwoofer
10" (250mm)	12" (300mm)
DFS® (Dual Fiberglass Structure)	DFS® (Dual Fiberglass Structure)
4¾" (120mm)	4¾" (120mm)
5" (126.6mm)	5¾" (146.5mm)
Simple voice coil: 2" (50mm)	Simple voice coil: 2" (50mm)
-	-
-	-
-	-
4Ω	4Ω
400W	500W
200W RMS	250W RMS
85dB	87dB
36Hz - 500Hz	32Hz - 500Hz
Sealed enclosure: 0.52 to 0.88 cu ft (15 to 25 l) Bass-reflex: 0.71 to 1.23 cu ft (20 to 35 l)	Sealed enclosure: 0.71 to 1.06 cu ft (20 to 30 l) Bass-reflex: 0.88 to 1.23 cu ft (25 to 35 l)
-	-



# UNIVERSAL

## An optimal compatibility

Enjoy this line's rich sound without altering the aesthetics of your car's cabin. Special attention was paid to design and dimensions during the development stages of these kits, to ensure optimal compatibility with as many different vehicles as possible.

The impressively compact size, achieved by reducing the housing depth, and the snap-off fixings make Universal kits quick to install.

We make it a point of honour to provide you with a material of flawless quality. Universal kits are equipped with the Polyglass cone, offering a natural sound without colouration. They are the perfect partner for the Aluminium/Magnesium inverted dome tweeter, providing renewed acoustic subtlety in your vehicle, and quite simply the pleasure of listening.



> Adjustable tweeter level



> Polyglass cone



> Basket: optimized dimensions and depth



### ICU 100

• <b>Type</b>	2-way coaxial kit
• <b>Diameter</b>	4" (100mm)
• <b>Cone</b>	Polyglass
• <b>Motor</b>	Ferrite
• <b>Mounting depth</b>	1 <sup>5</sup> / <sub>16</sub> "(49mm)
• <b>Voice coil diameter</b>	1" (25mm)
• <b>Tweeter</b>	Aluminium/Magnesium inverted dome
• <b>Crossover</b>	Integrated: 6dB/oct
• <b>Adjustable tweeter level</b>	Flat / High
• <b>Impedance</b>	4Ω
• <b>Max. power</b>	80W
• <b>Nom. power</b>	40W RMS
• <b>Sensitivity (2.83V/1m)</b>	90.3dB
• <b>Frequency response</b>	90Hz - 21kHz
• <b>Accessories</b>	Without grilles



### ICU 130

• <b>Type</b>	2-way coaxial kit
• <b>Diameter</b>	5" (130mm)
• <b>Cone</b>	Polyglass
• <b>Motor</b>	Ferrite
• <b>Mounting depth</b>	1 <sup>5</sup> / <sub>16</sub> "(48.9mm)
• <b>Voice coil diameter</b>	1" (25mm)
• <b>Tweeter</b>	Aluminium/Magnesium inverted dome
• <b>Crossover</b>	integrated: 6dB/oct
• <b>Adjustable tweeter level</b>	Flat / High
• <b>Impedance</b>	4Ω
• <b>Max. power</b>	120W
• <b>Nom. power</b>	60W RMS
• <b>Sensitivity (2.83V/1m)</b>	91.8dB
• <b>Frequency response</b>	90Hz - 21kHz
• <b>Accessories</b>	Without grilles



### ICU 165

• <b>Type</b>	2-way coaxial kit
• <b>Diameter</b>	6 <sup>1</sup> / <sub>2</sub> " (165mm)
• <b>Cone</b>	Polyglass
• <b>Motor</b>	Ferrite
• <b>Mounting depth</b>	1 <sup>5</sup> / <sub>16</sub> "(48.4mm)
• <b>Voice coil diameter</b>	1" (25mm)
• <b>Tweeter</b>	Aluminium/Magnesium inverted dome
• <b>Crossover</b>	Integrated: 6dB/oct
• <b>Adjustable tweeter level</b>	Flat / High
• <b>Impedance</b>	4Ω
• <b>Max. power</b>	140W
• <b>Nom. power</b>	70W RMS
• <b>Sensitivity (2.83V/1m)</b>	93dB
• <b>Frequency response</b>	60Hz - 21kHz
• <b>Accessories</b>	Without grilles



### ICU 570

• <b>Type</b>	2-way coaxial kit
• <b>Diameter</b>	5 x 7" (130 x 180mm)
• <b>Cone</b>	Polyglass
• <b>Motor</b>	Ferrite
• <b>Mounting depth</b>	2 <sup>5</sup> / <sub>16</sub> " (59.3mm)
• <b>Voice coil diameter</b>	1" (25mm)
• <b>Tweeter</b>	Aluminium/Magnesium inverted dome
• <b>Crossover</b>	Integrated: 6dB/oct
• <b>Adjustable tweeter level</b>	Flat / High
• <b>Impedance</b>	4Ω
• <b>Max. power</b>	140W
• <b>Nom. power</b>	70W RMS
• <b>Sensitivity (2.83V/1m)</b>	94dB
• <b>Frequency response</b>	60Hz - 21kHz
• <b>Accessories</b>	Without grilles



### ICU 690

• <b>Type</b>	2-way coaxial kit
• <b>Diameter</b>	6 x 9" (164 x 235mm)
• <b>Cone</b>	Polyglass
• <b>Motor</b>	Ferrite
• <b>Mounting depth</b>	3 <sup>5</sup> / <sub>16</sub> " (83.5mm)
• <b>Voice coil diameter</b>	1" (25mm)
• <b>Tweeter</b>	Aluminium/Magnesium inverted dome
• <b>Crossover</b>	Integrated: 6dB/oct
• <b>Adjustable tweeter level</b>	Flat / High
• <b>Impedance</b>	4Ω
• <b>Max. power</b>	160W
• <b>Nom. power</b>	80W RMS
• <b>Sensitivity (2.83V/1m)</b>	93.6dB
• <b>Frequency response</b>	55Hz - 21kHz
• <b>Accessories</b>	Grilles included



### ISU 130

### ISU 165

### ISU 200

• <b>Type</b>	2-way component kit	2-way component kit	2-way component kit
• <b>Diameter</b>	5" (130mm)	6½" (165mm)	8" (200mm)
• <b>Cone</b>	Polyglass	Polyglass	Polyglass
• <b>Motor</b>	Ferrite	Ferrite	Ferrite
• <b>Mounting depth</b>	1½⁄₁₆" (48.9mm)	1½⁄₁₆" (48.4mm)	2½" (63.5mm)
• <b>Voice coil diameter</b>	1" (25mm)	1" (25mm)	1" (25mm)
• <b>Tweeter</b>	Aluminium/Magnesium inverted dome	Aluminium/Magnesium inverted dome	Aluminium/Magnesium inverted dome
• <b>Crossover</b>	Integrated (connectors): 6dB/oct	Integrated (connectors): 6dB/oct	Integrated (connectors): 6dB/oct
• <b>Adjustable tweeter level</b>	Car/Display	Car/Display	Car/Display
• <b>Impedance</b>	4Ω	4Ω	4Ω
• <b>Max. power</b>	120W	140W	160W
• <b>Nom. power</b>	60W RMS	70W RMS	80W RMS
• <b>Sensitivity (2.83V/1m)</b>	91.8dB	93dB	93dB
• <b>Frequency response</b>	90Hz - 21kHz	60Hz - 21kHz	40Hz - 21kHz
• <b>Accessories</b>	Tweeter support Crossovers in line on connectors Supplied without grille	Tweeter support Crossovers in line on connectors Supplied without grille	Tweeter support Crossovers in line on connectors Supplied without grille

### ISU 690

### TWU 1.5

• <b>Type</b>	2-way component kit	Tweeter
• <b>Diameter</b>	6 x 9" (164 x 235mm)	1½⁄₁₆" (49.4mm)
• <b>Cone</b>	Polyglass	Aluminium/Magnesium inverted dome
• <b>Motor</b>	Ferrite	Neodymium
• <b>Mounting depth</b>	3¾⁄₁₆" (83.5mm)	1½⁄₁₆" (16.75mm)
• <b>Voice coil diameter</b>	1" (25mm)	1¾⁄₁₆" (20mm)
• <b>Tweeter</b>	Aluminium/Magnesium inverted dome	-
• <b>Crossover</b>	Integrated (connectors): 6dB/oct	Integrated: 6dB/oct
• <b>Adjustable tweeter level</b>	Car/Display	Car/Display
• <b>Impedance</b>	4Ω	4Ω
• <b>Max. power</b>	160W	100W
• <b>Nom. power</b>	80W RMS	15W RMS
• <b>Sensitivity (2.83V/1m)</b>	93.6dB	94dB
• <b>Frequency response</b>	55Hz - 21kHz	4kHz - 21kHz
• <b>Accessories</b>	Tweeter support Crossovers in line on connectors Supplied without grille	4 possibilities: "Flush", surface, tilted mounting. in factory location

# AUDITOR

## Your first installation with Focal sound

Comprising 5 coaxial kits, 2 component kits and 2 subwoofers, the Auditor line presents Focal's full DNA in terms of technology and sound, all within a limited budget.

These audio kits integrate the Focal inverted dome tweeter, one of our stand-out innovations. It offers excellent spatialisation, a very wide soundstage and provides sound quality that is unrivalled at this price point.

Discover new musical sensations with Auditor kits in multiple possible configurations, all along the lines of the flagship kit: the 165 AS, which stands out thanks to its high sensitivity and can be connected directly to a car radio.

The tweeter level can be adjusted between three positions for optimal listening comfort. The accessories supplied with the tweeter allow multiple mounting options to achieve the best possible sound image!

The gold standard of this line is a world-renowned best-seller.



> Mylar inverted dome tweeter



> Polypropylene cone



> U-shaped surround





	<b>RCX-100</b>	<b>RCX-130</b>	<b>RCX-165</b>	<b>RCX-570</b>
• <b>Type</b>	2-way coaxial kit	2-way coaxial kit	2-way coaxial kit	2-way coaxial elliptic kit
• <b>Diameter</b>	4" (100mm)	5" (130mm)	6½" (165mm)	5 x 7" (130 x 180mm)
• <b>Cone</b>	Polypropylene	Polypropylene	Polypropylene	Polypropylene
• <b>Motor</b>	Ferrite	Ferrite	Ferrite	Ferrite
• <b>Mounting depth</b>	1⅞" (48.2mm)	2½" (54.5mm)	3⅜" (86mm)	2⅜" (60mm)
• <b>Voice coil diameter</b>	1" (25mm)	1" (25mm)	1" (25mm)	1" (25mm)
• <b>Tweeter</b>	1" Mylar inverted dome	1" Mylar inverted dome	1" Mylar inverted dome	1" Mylar inverted dome
• <b>Crossover</b>	6db/oct	6db/oct	6db/oct	6db/oct
• <b>Impedance</b>	4Ω	4Ω	4Ω	4Ω
• <b>Max. power</b>	60W	100W	120W	120W
• <b>Nom. power</b>	30W RMS	50W RMS	60W RMS	60W RMS
• <b>Sensitivity (2.83V/1m)</b>	88dB	90dB	91.5dB	91.6dB
• <b>Frequency response</b>	80Hz - 21kHz	65Hz - 21kHz	60Hz - 21kHz	60Hz - 21kHz
• <b>Suggested load volume</b>	-	-	-	-
• <b>Accessories</b>	Supplied with grilles, fastening and screws	Supplied with grilles, fastening and screws	Supplied with grilles, fastening and screws	Supplied without grille

	<b>RCX-690</b>	<b>RSE-130</b>	<b>RSE-165</b>	<b>RSB-250</b>	<b>RSB-300</b>
• <b>Type</b>	3-way coaxial elliptic kit	2-way component kit	2-way component kit	Subwoofer	Subwoofer
• <b>Diameter</b>	6 x 9" ( 164 x 265mm)	5" (130mm)	6½" (165mm)	10" (250mm)	12" (300mm)
• <b>Cone</b>	Polypropylene	Polypropylene	Polypropylene	Polypropylene	Polypropylene
• <b>Motor</b>	Ferrite	Ferrite	Ferrite	Ferrite	Ferrite
• <b>Mounting depth</b>	3⅜" (80.5mm)	2½" (54.5mm)	3⅜" (86mm)	4⅝" (117mm)	5⅝" (142mm)
• <b>Voice coil diameter</b>	1⅜" (35mm)	1" (25mm)	1" (25mm)	Dual voice coil: 2" (50mm)	Dual voice coil: 2" (50mm)
• <b>Tweeter</b>	1" Mylar inverted dome tweeter/midrange	1" Mylar inverted dome	1" Mylar inverted dome	-	-
• <b>Crossover</b>	6db/oct	Separated pre-wired: 12dB/oct	Separated pre-wired: 12dB/oct	-	-
• <b>Impedance</b>	4Ω	4Ω	4Ω	2 x 4Ω	2 x 4Ω
• <b>Max. power</b>	160W	100W	120W	500W	600 W
• <b>Nom. power</b>	80W RMS	50W RMS	60W RMS	250W RMS	300W RMS
• <b>Sensitivity (2.83V/1m)</b>	92dB	90dB	91.5dB	88dB	90dB
• <b>Frequency response</b>	50Hz - 21kHz	65Hz - 21kHz	60Hz - 21kHz	35Hz - 500Hz	30Hz - 500Hz
• <b>Suggested load volume</b>	-	-	-	Sealed enclosure: 0.71 to 1.06 cu ft (20 to 30 l)	Sealed enclosure: 1.061 to 1.41 cu ft (30 to 40 l)
• <b>Accessories</b>	Supplied with grilles, fastening and screws	Supplied with grilles, fastening and screws	Supplied with grilles, blinding and screws	-	-

# AND ALSO...

## FOR A COMPLETE SOLUTION

To combine with and complement your installation, we also provide subwoofers, amplifiers and cables to create a complete audio system.

With our **subwoofers**, whether passive or active, bass-reflex, ultra flat and/or amplified, you enjoy the full benefit of the power and dynamics of the bass. Easy to install, these Focal subwoofers also feature many settings, so you can always find better listening comfort and finer sound nuances as you travel.

To experience the sensations of a precise but controlled and stable sound in your car, Focal **electronics** have it all. Create the type of architecture you're looking for, as compact as you need it to be: the audio processing chain can be optimized with digital signal processing and one or more amplifiers.

**Accessories and cables** play a key role in your audio architecture. With Hilo.V3, we provide solutions for any amplification scenario so that you can get the best from your system. They also optimize connections between components: the car radio, electronics and acoustics. They guarantee a high-quality, secure installation.

# 01

SUBWOOFERS

# 02

ELECTRONICS

# 03

CABLES & ACCESSORIES

# 01 SUBWOOFERS

4 enclosures, 4 ways of obtaining intense bass and power.

**PSB 200** is compact and easy-to-use, offering stunning performance thanks to the 250W of its subwoofer.

**Bomba BP 20** is a bass-reflex box with a moulded vent to reduce air circulation noise. With its integrated Class D amplifier, this 2-in-1 enclosure takes up minimum space while offering a great bass level that is both tight and powerful.

A unique concept of an amplified subwoofer connected to a 2-channel amplifier, the **Ibus 2.1** boosts the bass and adds power to your system.

With its integrated amplifier, **Ibus 20** is ready to go. Easy to install, you simply connect the HP outputs from your radio using the 'Plug & Play' ISO cable provided.



## PSB 200

• Type	Compact passive subwoofer enclosure
• Woofer diameter	8" (200mm)
• Impedance	4Ω
• Max. power	250W
• Nom. power	150W RMS
• Sensitivity (2.83V/1m)	83dB
• Frequency response	45Hz - 150Hz
• Accessories	Screws, fixation system
• Weight	15.7lbs (7kg)
• Dimensions (L x H x W)	19¼ x 4¾ x 12" (109 x 489 x 304mm)



	BOMBA BP 20	IBUS 20	IBUS 2.1
• Type	Compact active subwoofer enclosure Class D amplifier High and low level audio input (OEM and aftermarket head units compatibility)	Active enclosure with subwoofer	Active enclosure with subwoofer True 2.1 system 1 amplifier for the subwoofer 1 amplifier for the front channels very high power
• Woofer diameter	8" (200mm)	8" (200mm)	8" (200mm)
• Sub max. power	300W	150W	150W
• Sub nom. power	150W RMS	75W RMS	75W RMS
• Frequency response	20Hz - 125Hz	45Hz - 150Hz	45Hz - 150Hz
• Speaker max. power	-	-	2 x 110W RMS
• Speaker nom. power	-	-	2 x 55W RMS
• Frequency response	-	-	55Hz - 55kHz
• Function	Bandpass technology Phase selector : 0 - 180° Adjustable frequency cut off : 45Hz - 120Hz	High-level inputs Autopower ON	High-level inputs Autopower ON Amplification 2 front channels
• Accessories	-	Remote & Plug & Play wiring	Remote & Plug & Play wiring
• Weight	24.4lbs (11kg)	-	-
• Dimensions (H x l x P)	17¾ x 9¼ x 12¼" (249 x 439 x 323mm)	2¼ x 13¾ x 9¼" (71.5 x 344 x 250mm)	2¼ x 13¾ x 9¼" (71.5 x 344 x 250mm)

## IY BUS

Only one remote to control the sound level of the two Ibus enclosures (Ibus 20/2.1)

Supplied with cables





# 2 ELECTRONICS

Thanks to our **FPX** and **FDS** amplifier ranges, you'll immediately find your balance between power, versatility, compactness and audio quality.



FPX



FDS

	<b>FPX 5.1200</b>	<b>FPX 4.400 SQ</b>	<b>FPX 4.800</b>
• <b>Type</b>	Premium Class D Amplifier - 5 channels	Premium Class AB Amplifier - 4/3/2 channels Sound Quality	Premium Class D Amplifier - 4/3/2 channels
• <b>CEA Power (4Ω)</b>	4 x 75W RMS + 1 x 420W RMS	4 x 70W RMS	4 x 120W RMS
• <b>Max. power (2Ω)</b>	4 x 120W RMS + 1 x 720W RMS	4 x 100W RMS	4 x 185W RMS
• <b>Max. power (1Ω)</b>	-	-	-
• <b>Max. power (bridged 4Ω)</b>	2 x 240W RMS + 720W RMS	2 x 200W RMS	2 x 370W RMS
• <b>Crossovers</b>	Configurable High-Pass / Low-Pass: 50Hz - 500Hz	Configurable High-Pass / Low-Pass: 50Hz - 5000Hz	Configurable High-Pass / Low-Pass: 50Hz - 500Hz
• <b>Copy mode</b>	6CH/4CH/2CH	4CH/2CH	4CH/2CH
• <b>Functions</b>	Full range Mode Bass Boost Subsonic filter	Full Range	Full Range
• <b>Phase adjustment</b>	Yes	-	-
• <b>Protections</b>	Short circuit / Over-current / Reverse polarity /DC / Voltage drop / Heat protection	Short circuit / Over-current / Reverse polarity /DC / Voltage drop / Heat protection	Short circuit / Over-current / Reverse polarity /DC / Voltage drop / Heat protection
• <b>Accessories</b>	Remote control, screws, fuses	Screws, fuses, terminal board tools	Screws, fuses, terminal board tools
• <b>Weight</b>	9lbs (4.1kg)	8.2lbs (3.7kg)	4.4lbs (2kg)
• <b>Dimensions (D xW x H)</b>	11 <sup>3</sup> / <sub>16</sub> x 6 <sup>7</sup> / <sub>8</sub> x 2 <sup>1</sup> / <sub>4</sub> " (300 x 175 x 57mm)	12 <sup>3</sup> / <sub>8</sub> x 6 <sup>7</sup> / <sub>8</sub> x 2 <sup>1</sup> / <sub>4</sub> " (314 x 175 x 57mm)	9 <sup>5</sup> / <sub>16</sub> x 5 <sup>3</sup> / <sub>16</sub> x 2 <sup>1</sup> / <sub>16</sub> " (237 x 132 x 53mm)

	<b>FPX 1.1000</b>	<b>FDS 4.350</b>	<b>FDS 1.350</b>	<b>AP-4340</b>
	Premium Class D Amplifier - Mono	Class D Amplifier - 4/3/2 channels	Class D Amplifier - Mono - RCA low-level inputs	Class AB Amplifier 4/3/2 channels RCA inputs
	1 x 420W RMS	4 x 58W RMS	1 x 210W RMS	4 x 70W RMS
	1 x 700W RMS	4 x 100W RMS	1 x 350W RMS	4 x 95W RMS
	1 x 1000W RMS	-	-	-
	-	2 x 200W RMS	-	2 x 190W RMS
	Configurable Low-Pass: 50Hz - 250Hz	Configurable High-Pass / Low-Pass: 40Hz - 400Hz	Low-Pass: 40Hz - 400Hz	High-Pass (channel 1-2): 60Hz - 1.2kHz High-Pass (channel 3-4): 100Hz-2.2kHz Low-Pass : 50 - 250Hz
	-	-	-	-
	Bass Boost (6/12dB) Crossover subsonic (10Hz - 50Hz)	Full Range	Bass Boost (0/6dB/12dB)	Full Range
	Progressive	-	Progressive (0 - 180°)	-
	Short circuit / Over-current / Reverse polarity /DC / Voltage drop / Heat protection	Short circuit / Over-current / Reverse polarity /DC / Voltage drop / Heat protection	Short circuit / Over-current / Reverse polarity /DC / Voltage drop / Heat protection	-
	Remote control, screws, fuses, terminal board tools	Screws, fuses	Screws, fuses	-
	5.6lbs (2.55kg)	1.9lbs (850g)	1.9lbs (850g)	-
	11 <sup>1</sup> / <sub>16</sub> x 5 <sup>3</sup> / <sub>16</sub> x 2 <sup>1</sup> / <sub>16</sub> " (297 x 132 x 53mm)	7 <sup>1</sup> / <sub>16</sub> x 4 <sup>1</sup> / <sub>4</sub> x 1 <sup>1</sup> / <sub>16</sub> " (199 x 108 x 43mm)	7 <sup>1</sup> / <sub>16</sub> x 4 <sup>1</sup> / <sub>4</sub> x 1 <sup>1</sup> / <sub>16</sub> " (199 x 108 x 43mm)	13 <sup>3</sup> / <sub>8</sub> x 2 x 9 <sup>1</sup> / <sub>4</sub> " (340 x 50 x 235mm)



## Manager Focal FSP-8 software

**PC compatibility:** Windows XP/Vista/Seven/8/10  
**Simplified set-up and dynamic help**  
**Equaliser:** 10 bands, fully customisable for every single channel  
**High-pass/low-pass filter/bandpass control:** 16Hz - 20kHz  
**Delay adjustment range:** 0-22ms per channel  
**Delay adjustment incrementation:** 0.1ms  
**Phase inverter**



[NB : This pen is not for sale. It only indicates scale.]

## IMPULSE 4.320

• <b>Type</b>	Class D ultra-compact Amplifier - 4/3/2 channels
• <b>CEA power (4Ω)</b>	4 x 55W RMS
• <b>Max. power (2Ω)</b>	4 x 80W RMS
• <b>Max. power (4Ω bridged)</b>	2 x 160W RMS
• <b>Crossovers</b>	Activable/deactivable fixed at 75Hz on channels 1/2 Configurable from 40Hz-200Hz on channels 3/4
• <b>Copy Mode</b>	4 CH/2CH
• <b>Setting</b>	Adjustable Phase 0/180° on channels 3/4
• <b>Protections</b>	Short circuit / Over-current / Reverse polarity / DC / Voltage drop / Heat protection
• <b>Weight</b>	1.2lbs (550g)
• <b>Dimensions (L x H x l)</b>	6 <sup>7</sup> / <sub>8</sub> x 1 <sup>7</sup> / <sub>8</sub> x 2 <sup>5</sup> / <sub>8</sub> " (175 x 47 x 66.5mm)



## IY - AC IMPULSE 4.320

Adapter Y cable - Focal Impulse 4.320  
 ISO standard  
 Easy Plug & Play installation  
 Length: 1m  
 No soldering or modification of your original system  
 ISO standard compatible



## HILO V3

• <b>Type</b>	High-level to RCA line stereo converter
• <b>Function</b>	Converts a stereo amplified signal in two low-level line outputs for an amplifier  DC and AC detection modes  Automatic remote output  Speaker simulation network to avoid head-unit muting.
• <b>Bandwith (+/-1dB)</b>	10Hz - 140kHz
• <b>Signal/Noise ratio</b>	100dB
• <b>Distorsion</b>	< 0.01 %

## FSP-8

• <b>Type</b>	8-channel sound processor
• <b>Inputs</b>	Selectable high/low-level inputs for compatibility with factory or after-market head units  High-resolution digital input (24 bits/192kHz)  Auxiliary stereo input
• <b>Max output (with 10 kΩ)</b>	3.4 V
• <b>Frequency response</b>	Digital crossover OFF/-3 dB: 5Hz- 21kHz
• <b>Signal/Noise ratio</b>	-90dBA (analog input) -99dBA (optical)
• <b>Distortion - 10 kΩ - @ 1kHz (with 22kHz Low-Pass filter)</b>	0.02 %
• <b>Accessories</b>	Remote control with LED screen (sold separately)
• <b>Dimensions (L x H x W)</b>	5 <sup>5</sup> / <sub>16</sub> " x 8 <sup>3</sup> / <sub>16</sub> " x 1 <sup>7</sup> / <sub>8</sub> " (135 x 218 x 48mm)



## FSP-8 remote control

Enables you to control the main functions of the FSP-8: Adjust overall gain, subwoofer volume, and input selection for the FSP-8  
 Reminds you of the stored pre-sets  
 Notched knob  
 LED backlit screen  
**Dimensions (LxHxW):** 1<sup>1</sup>/<sub>2</sub>" x 4<sup>3</sup>/<sub>16</sub>" x 1<sup>1</sup>/<sub>4</sub>" (38x110x31.3mm)

# 3 CABLES & ACCESSORIES



## PK8

**8 AWG Complete supply kit**  
(Amplifier-speakers)  
16ft (4.9m) supply cable (8.3mm<sup>2</sup>)  
3.3ft (1m) ground cable (8.3mm<sup>2</sup>)  
32.8ft (10m) speaker cable  
16.4ft (5m) remote cable  
16.4ft (5m) RCA cable  
(2x90° bent plugs and 2 straight plugs)  
60A fuse-box  
Accessory pack

## PK21

**4AWG Complete supply kit**  
(Amplifier-speakers)  
16ft (4.9m) supply cable (21mm<sup>2</sup>)  
3.3ft (1m) ground cable (21mm<sup>2</sup>)  
32.8ft (10m) speaker cable  
16.4ft (5m) remote cable  
16.4ft (5m) RCA cable  
(2x90° bent plugs and 2 straight plugs)  
80A fuse-box  
Accessory pack

## ER1

RCA cable  
1 x 1m (3.3ft)

## ER3

RCA cable  
1 x 3m (9.9ft)

## ES15

1 roll: 15 AWG  
12m x 1.5mm<sup>2</sup>  
(39ft)

## ES25

1 roll: 13 AWG  
12m x 2.5mm<sup>2</sup>  
(39ft)

## PR5

RCA cable  
5m (16.4ft)  
Male/male plugs  
2 x 90° bent plugs  
for difficult locations

## PS15

**Flat speaker cable.**  
15 AWG/1.5mm<sup>2</sup>  
High performances, easy to install.  
Soft touch insulant.  
Roll: 39ftx15 AWG  
(12mx1.5mm<sup>2</sup>)

## PS25

**Flat speaker cable.**  
13 AWG/2.5mm<sup>2</sup>  
High performances, easy to install.  
Soft touch insulant.  
Roll: 39 ft x 13 AWG  
(12mx2.5mm<sup>2</sup>)

## ER5

RCA cable  
1 x 5m (16.4ft)

## EY05

RCA cable  
2 x 0.5m (2 x 1.64ft)



## B.A.M.

### 3 technical materials, 3 strategic functions

This acoustic insulation kit is completing and essential to a quality car audio installation. From its use depends optimum acoustic rendering of speakers, amplifiers and installed accessories. Technical materials made of honeycombed damping material, an aluminum sheet and a viscoelastic complex (Butyl).

## B.A.M. XXXL

1 roll of 19<sup>1</sup>/<sub>16</sub> x 236<sup>1</sup>/<sub>4</sub>" (50x600cm) (3m<sup>2</sup>)



## B.A.M. XL

1 sheet 19<sup>1</sup>/<sub>16</sub>"x78<sup>3</sup>/<sub>4</sub>"  
(50x200cm) (1m<sup>2</sup>)

## Tool Set

Set of 11 composite tools to remove door panel.  
The complementary product for quality car audio installations without risk of aesthetic damage.



# FOCAL<sup>®</sup> INSIDE

Focal Inside is an offer for all drivers who want access to quality, custom Plug & Play solutions that are perfectly suited to their vehicle. From the 'simplest' kit to the most complete amplified system, the Focal Inside offer is quick and easy to install in place of the original system, without modifying the environment.

Our offer covers more than 20 car manufacturers and is compatible with over 200 vehicles. To guide you in your choice of audio system, we have developed a dedicated website. By selecting your vehicle model and desired level of customisation, you can build your sound experience and configure the solution best suited to your requirements, in just a few clicks.



Check your vehicle compatibility on:

**[www.focal-inside.com](http://www.focal-inside.com)**

*For more information about Focal Inside, refer to the Focal Inside catalog.*



RENAULT



SUBARU



DS AUTOMOBILES



CITROËN



TOYOTA



SCION



LEXUS



RENAULT-SAMSUNG



DACIA

smart



OPEL



VW



SEAT



ISUZU



NISSAN



LADA

ŠKODA



PEUGEOT



HARLEY-DAVIDSON  
COMPANY

classic loudspeakers



custom install



car audio



headphones & multimedia



studio monitors



**FOCAL**

Focal-JMLab\* - BP 374 - 108, rue de l'Avenir - 42353 La Talaudière cedex - France - +33 (0) 477 435 700

Focal® is a registered trademarks of Focal-JMLab®. Non-binding pictures. Photos L'Atelier Sylvain Madelon. SCAA190919/1 - PC1310  
Due to constant technological advances, Focal-JMLab® reserves its right to modify prices and specifications without notice.



GB  
September 2019